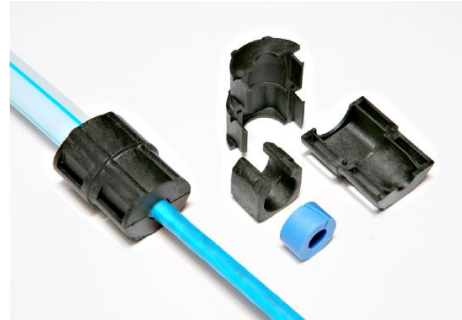


## FibreFlow™ Divisible Duct Seal Plugs



### Product Description

Divisible mini-duct sealing plug sets developed to provide an effective and simple solution for gas and water tight duct sealing requirements. The modular system enables installation in new and existing situations.

### Features

- Gas and Watertight upto 0.5 Bar
- Suitable for retrofitting
- Easy Installation
- Slim design

### Technical Specification

|                                 |                                  |
|---------------------------------|----------------------------------|
| Plastic Shells:                 | Glass-fibre reinforced polyamide |
| Cutting Block:                  | Glass-fibre reinforced polyamide |
| Sealing Plug:                   | TPE                              |
| Sealing Pressure:               | up to 0.5 Bar                    |
| Pull-out force duct             | ≥ 100N                           |
| Mechanical compression Strength | ≥ 1000N, 10 sec.                 |

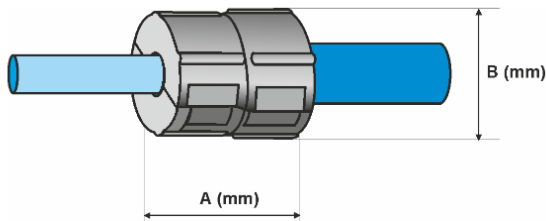


This document is intended as a guide only. Whilst the information it contains is believed to be correct, Emtelle can take no responsibility for actions taken based on the information contained in this document. Emtelle reserves the right to make changes to this document without notice. All sales of product are subject to Emtelle's terms and conditions of sale only, which can be found on Emtelle's website.

This document is protected by copyright (c) Emtelle UK Limited [2016]. The products depicted are protected by intellectual property rights. Any unauthorized copying of this document or of our products is prohibited and Emtelle UK Limited will take action to prevent any infringement of its rights and to claim damages for the loss that it suffers.

[www.emtelle.com](http://www.emtelle.com)

## Product overview



| Emtelle Product code | Description                          | Duct Size (OD) | Cable Diameter | Size A (mm) | Size B (mm) | Supply qty (per box) |
|----------------------|--------------------------------------|----------------|----------------|-------------|-------------|----------------------|
| 73560                | MINI DUCT CABLE SEAL 10 (2.5-1.5mm)  | 10             | 1.5 - 2.5      | 32          | 25          | 25                   |
| 71161                | MINI DUCT CABLE SEAL 10 (3.5-2.5mm)  |                | 2.5 - 3.5      |             |             |                      |
| 71162                | MINI DUCT CABLE SEAL 10 (5.0-3.5mm)  |                | 3.5 - 5.0      |             |             |                      |
| 71163                | MINI DUCT CABLE SEAL 10 (6.5-5.0mm)  |                | 5.0 - 6.5      |             |             |                      |
| 71164                | MINI DUCT CABLE SEAL 10 (7.5-6.5mm)  |                | 6.5 - 7.5      |             |             |                      |
| 73561                | MINI DUCT CABLE SEAL 12 (2.5-1.5mm)  | 12             | 1.5 - 2.5      | 32          | 25          | 25                   |
| 71165                | MINI DUCT CABLE SEAL 12 (3.5-2.5mm)  |                | 2.5 - 3.5      |             |             |                      |
| 71166                | MINI DUCT CABLE SEAL 12 (5.0-3.5mm)  |                | 3.5 - 5.0      |             |             |                      |
| 71167                | MINI DUCT CABLE SEAL 12 (6.5-5.0mm)  |                | 5.0 - 6.5      |             |             |                      |
| 71168                | MINI DUCT CABLE SEAL 12 (8.0-6.5mm)  |                | 6.5 - 8.0      |             |             |                      |
| 73339                | MINI DUCT CABLE SEAL 12 (8.5-7.0mm)  | 7.0 - 8.5      |                |             |             |                      |
| 73562                | MINI DUCT CABLE SEAL 14 (2.5-1.5mm)  | 14             | 1.5 - 2.5      | 34          | 29          | 25                   |
| 73340                | MINI DUCT CABLE SEAL 14 (3.5-2.5mm)  |                | 2.5 - 3.5      |             |             |                      |
| 73341                | MINI DUCT CABLE SEAL 14 (5.0-3.5mm)  |                | 3.5 - 5.0      |             |             |                      |
| 71294                | MINI DUCT CABLE SEAL 14 (6.5-5.0mm)  |                | 5.0 - 6.5      |             |             |                      |
| 71169                | MINI DUCT CABLE SEAL 14 (8.0-6.5mm)  |                | 6.5 - 8.0      |             |             |                      |
| 71170                | MINI DUCT CABLE SEAL 14 (10.0-8.0mm) | 8.0 - 10.0     |                |             |             |                      |
| 73563                | MINI DUCT CABLE SEAL 16 (2.5-1.5mm)  | 16             | 1.5 - 2.5      | 34          | 29          | 25                   |
| 73564                | MINI DUCT CABLE SEAL 16 (3.5-2.5mm)  |                | 2.5 - 3.5      |             |             |                      |
| 73565                | MINI DUCT CABLE SEAL 16 (5.0-3.5mm)  |                | 3.5 - 5.0      |             |             |                      |
| 73342                | MINI DUCT CABLE SEAL 16 (6.5-5.0mm)  |                | 5.0 - 6.5      |             |             |                      |
| 71171                | MINI DUCT CABLE SEAL 16 (8.0-6.5mm)  |                | 6.5 - 8.0      |             |             |                      |
| 71172                | MINI DUCT CABLE SEAL 16 (10.0-8.0mm) | 8.0 - 10.0     |                |             |             |                      |
| 73566                | MINI DUCT CABLE SEAL 18 (5.0-3.5mm)  | 18             | 3.5 - 5.0      | 36          | 34          | 25                   |
| 72790                | MINI DUCT CABLE SEAL 18 (6.5-5.0mm)  |                | 5.0 - 6.5      |             |             |                      |
| 72788                | MINI DUCT CABLE SEAL 18 (8.0-6.5mm)  |                | 6.5 - 8.0      |             |             |                      |
| 72789                | MINI DUCT CABLE SEAL 18 (9.5-8.0mm)  |                | 8.0 - 9.5      |             |             |                      |
| 71173                | MINI DUCT CABLE SEAL 18 (12.0-9.4mm) |                | 9.4 - 12.0     |             |             |                      |

This document is intended as a guide only. Whilst the information it contains is believed to be correct, Emtelle can take no responsibility for actions taken based on the information contained in this document. Emtelle reserves the right to make changes to this document without notice. All sales of product are subject to Emtelle's terms and conditions of sale only, which can be found on Emtelle's website.

This document is protected by copyright (c) Emtelle UK Limited [2016]. The products depicted are protected by intellectual property rights. Any unauthorized copying of this document or of our products is prohibited and Emtelle UK Limited will take action to prevent any infringement of its rights and to claim damages for the loss that it suffers.

[www.emtelle.com](http://www.emtelle.com)

|       |                                      |    |            |    |    |    |
|-------|--------------------------------------|----|------------|----|----|----|
| 73567 | MINI DUCT CABLE SEAL 20 (5.0-3.5mm)  | 20 | 3.5 – 5.0  | 36 | 34 | 25 |
| 73343 | MINI DUCT CABLE SEAL 20 (6.5-5.0mm)  |    | 5.0 - 6.5  |    |    |    |
| 73344 | MINI DUCT CABLE SEAL 20 (8.0-6.5mm)  |    | 6.5 - 8.0  |    |    |    |
| 72145 | MINI DUCT CABLE SEAL 20 (10.0-8.0mm) |    | 8.0 - 10.0 |    |    |    |
| 71174 | MINI DUCT CABLE SEAL 20 (12.0-9.4mm) |    | 9.4 - 12.0 |    |    |    |

### Packaging And Labelling

All products suitably packaged in recyclable materials and clearly labelled with Emtelle Product Code and Description where possible.

Supplied 2 half-shells and a split rubber seal



This document is intended as a guide only. Whilst the information it contains is believed to be correct, Emtelle can take no responsibility for actions taken based on the information contained in this document. Emtelle reserves the right to make changes to this document without notice. All sales of product are subject to Emtelle's terms and conditions of sale only, which can be found on Emtelle's website.

This document is protected by copyright (c) Emtelle UK Limited [2016]. The products depicted are protected by intellectual property rights. Any unauthorized copying of this document or of our products is prohibited and Emtelle UK Limited will take action to prevent any infringement of its rights and to claim damages for the loss that it suffers.

[www.emtelle.com](http://www.emtelle.com)